

Newsletter

THE SOUTHOVER PARTNERSHIP



Front cover artwork by Jahnayah - KM
AUTUMN TERM 2025

THE EXECUTIVE HEADTEACHER'S AUTUMN TERM NEWSLETTER WELCOME



As we come to the end of an exceptionally busy and productive autumn term, I want to take a moment to reflect on just how much has taken place across our school community. We began the year with our Learning Review Day and have since delivered three online parent/carers webinars, our Executive Headteacher's Welcome to the New Academic Year session, an Understanding Short Term Targets session, and an Assessment and Data session. We also introduced our new Parents/Carers Evening, which was very well received and marked an important step in strengthening home-school communication.

This term we were also delighted to host our first Certificate Presentation Evening, a wonderful celebration of student achievement and personal growth. Thank you to parents and carers for attending and celebrating with us.

Alongside the excellent levels of engagement we have seen in classrooms, where students have immersed themselves in their learning and some have even taken Functional Skills exams, we have also enjoyed a variety of trips and visits, all of which you will read more about in this newsletter. These experiences culminated in a whole-school trip to Alexandra Palace for ice skating on Thursday 4th December which was enjoyed by all.

Our charity events have also brought the community together, including our Macmillan Cancer Care Coffee Morning, which was a meaningful opportunity to give back and support an important cause.

This term has also marked our move into the Finchley site, and I want to acknowledge how well both staff and students have adapted. Change can be challenging, yet the flexibility, resilience, and teamwork shown across the community have been exceptional. I am deeply grateful to our parents and carers for their support throughout this transition. Your encouragement and understanding have played a key role in helping us create a calm, safe, and positive environment for all.

I am incredibly proud of our school community and the progress our students make every single day. Their determination, curiosity, and personal growth are evident in so many small but meaningful moments across all our sites. It has been a joy to see staff engaging so positively with students, building trust, fostering independence, and creating learning experiences that truly make a difference. The strength of these relationships is at the heart of our work, and it is inspiring to watch students thrive because of the support, encouragement, and care they receive.

I would like to extend my sincere thanks to our dedicated and hard-working staff team, who remain deeply committed to ensuring our students have the best possible experiences, opportunities, and support. I am equally grateful to all our parents and carers for your ongoing encouragement and partnership. It truly makes a difference.

As we approach the festive break, I hope everyone takes time to rest, recuperate, and enjoy precious moments with loved ones. The students return on Wednesday 7th January 2026. Wishing you all a wonderful holiday season and a happy, healthy start to the New Year.

Angela Moore



WELCOME FROM THE HEAD OF SCHOOL- KINGSBURY

After a mild couple of months, the autumn leaves have finally fallen, and the colder weather has started to take hold. I want to take a moment to reflect on what has been an incredibly successful and busy first term for Kingsbury Manor

The energy and enthusiasm shown by our students, particularly the way they have embraced the academic challenges, have been truly inspiring. We've seen strong academic growth across all year groups, with a particular focus on our post-16 students who are actively working on their next steps and life beyond KM.

Beyond the classroom, there have been a variety of different educational trips and students particularly enjoyed careers fairs, the Tate Modern and Twist museums. I am especially proud of the way our new students have settled in and are now fully integrated into school life.

This term has also focused on staff professional development and the continuous refinement of our teaching practice. Our focus on questioning and adapting resources has ensured that every student, regardless of their starting point, is being challenged and supported to reach their full potential.

While we take time to rest and recharge over the festive period, we will be looking forward to the Spring Term, where we will continue to build upon the progress already made.

Thank you for your continued support, I wish all our families a restful and fun filled Christmas.

Kerrie Marshall



WELCOME FROM THE HEAD OF SCHOOL - EDGWARE

As the long nights draw in and the Christmas lights shine to lead the way to the end of 2025, it is time to reflect and evaluate. The autumn term has been one of growth and rejuvenation with Edgware welcoming new students as well as warmly welcoming back returning ones. It has been a busy term with a strong emphasis on learning and embarking on new pathways. Both new and returning students have made excellent progress.

Firstly, Sam and Alfie have made excellent starts to their secondary school timetable. They have impressed us with their learning and ability to quickly adapt to the Southover way. Alfie's cheers in assembly and Sam's ice skating prowess have been highlights of the term. Sophia has had a slower transition into school and we hope that in the spring term we will be seeing much more of her. Arad has become a popular member of the school community and I am hopeful that he will continue to develop and showcase his skills next term. Amayah has charmed and amazed everyone with her positive nature. She is the living embodiment of this term's value - perseverance. She has also been elected school council representative - not bad for her first term!

Taylor has settled into good learning this term and has also started playing rugby outside of school. As a player at the opposite end of my career, I can attest to the values rugby brings, and hope Taylor continues, as he is at a fine club. It is lovely to hear about our students pursuing interests beyond the school. Noa and Eliana both volunteer in their communities and Noa has also began work experience, receiving excellent feedback praising her skills. Eliana has also enjoyed a positive new term and has amazed everyone with her Boggle skills and quick grasp of new learning.

Blu has carried on with her studies and also started a musical club at lunchtime. She has enjoyed sharing her extensive knowledge with other students. Sergio has also shared his knowledge through a comprehensive lesson delivered to younger students about tanks...the feedback from the students would make OFSTED proud!

Jake and Liam have also made good progress this year, Liam overcoming his initial nervousness to complete his speaking and listening task, and Jake working hard whatever the topic - his industriousness and cheerfulness are an example to others. Zack is consistently studious, putting 100% into every task, and will always want to walk the dog, irrespective of the weather! Another excellent dog walker - and a superb cook - is Nina. We have been delighted to see Nina attending school consistently; she is a valued member of our community who has made significant progress this term.

Angel's art work and cooking continue to impress, as does her caring nature towards other students. She makes time for others and shows a deep understanding of their struggles - this is a true sign of maturity. This was recognised through her winning the Jack Petchey award this term ; her ideas to support other students' mental and physical wellbeing were thoughtful and well developed.

Letia continues to make good progress in maths and English, while also demonstrating her creative side, which we hope she will be able to take forward to college next year.

It has been a long and demanding term, and I am sure you will join me in offering a heartfelt thank you (and a Merry Christmas) to all the staff at Southover, including those whose work may not always be visible but without whom the pupils' terrific achievements would not be possible. I wish you all a restful festive period and a splendid New Year.

Jonathan Harper

WELCOME FROM THE HEAD OF SCHOOL – FINCHLEY



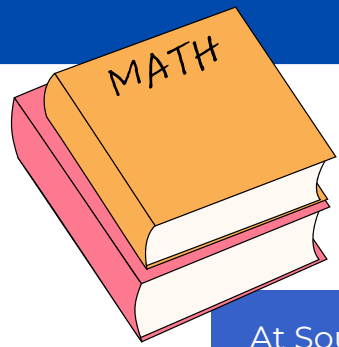
It's been an eventful term at Finchley - we've moved into our lovely new building and spent some time and effort to make it feel special! We have been doing some renovating in the garden, getting ready for a lovely veggie patch, PE zone with a basketball hoop and table tennis table, and calm zone with lovely flowers. We have enjoyed meeting some lovely furry visitors: a couple of friendly cats and a sweet family of foxes, who enjoy gambolling around the garden and carpark!

Our students have been growing and embarking on news adventures. We visited the zoo, Go Ape, the Science Museum, and much more and before the end of term we will also have seen an exciting panto and also gone bowling. Some of our students have completed mock examinations and speaking and listening assessments for their Functional Skills and GCSE courses. Our students had some fantastic PE sessions with students from KM and Edgware too and have enjoyed making new friends across the Southover sites!

It's lovely to see our students grow in confidence day-to-day. Whether it's cooking something delicious and sharing it with others, talking about a great book they're enjoying, or helping a friend up when they fall on the ice skating rink, our students are becoming capable, friendly and happy adults. Although we all have setbacks, each day brings a new win!

I hope you all have a lovely break. Merry Christmas if you celebrate it, and I look forward to seeing you in January.

Giselle Hobbs



SPOTLIGHT ON: MATHS

At Southover Partnership School, we are proud to deliver a mastery-based maths curriculum that ensures all pupils build strong foundations in numeracy. The mastery approach means that pupils must fully understand and master key concepts at one stage before progressing to the next. This structure provides clarity, consistency, and a clear route of progression for all our learners.

From September 2025, every pupil joining the school will follow one of our two distinct Maths pathways:

- 'Low Attainers Pathway': Pupils will work towards GCSE Foundation, Functional Skills Level 1 and 2, Entry Level Certificates, and Entry Level Functional Skills. This pathway also includes pupils in our Nurture Group, who may still be working at primary school level. Their topics will be adapted to their individual level of learning while still following the same pathway structure.
- 'High Attainers Pathway': Pupils will progress towards Functional Skills Level 2, GCSE Higher, and for some, A-level Maths. This pathway ensures that pupils who are ready for more advanced work are stretched and challenged accordingly.
-

More importantly, pupils across all three of our sites will study the same topics if they are on the same pathway and stage, regardless of age. For example, a KS4/KS5 pupil still consolidating Stage 1 concepts may cover the same material as a Year 7 pupil, ensuring that gaps in understanding are addressed before moving on. Equally, a high-attaining Year 8 pupil may already be tackling GCSE Higher topics, giving them the opportunity to excel at a faster pace.

Every pupil will complete a baseline test at the start of the year, alongside other assessments (such as CAT tests) and teacher observations. These results will determine each pupil's pathway and stage, allowing us to deliver a highly personalised learning journey.

To support this structure, all pupils will receive a minimum of three hourly maths lessons per week. Pupils working towards GCSEs and A-levels will receive additional teaching time to ensure they are fully prepared. Beyond the classroom, we are also planning to introduce a Maths Homework Club for pupils who may not have adequate support at home, as well as targeted Numeracy Interventions for those who need extra help.



TITLE

We are also investing in Rapid Maths, a primary school intervention programme designed to help struggling learners cover knowledge gaps through personalised support, repeated practice of basic number skills, and engaging activities. This resource will sit alongside our existing provision, further strengthening the support we can offer.

We are also committed to preparing pupils for adulthood by equipping them with essential life skills. Alongside academic learning, some pupils have lessons focused on managing finances, reasoning, and problem solving, helping them to develop practical skills for independence. These sessions encourage pupils to make informed decisions, think critically, and apply their learning to real-life situations, ensuring they are ready to face the challenges of adult life with confidence.

Finally, we are committed to investing in our staff. A series of CPD opportunities will be rolled out to ensure teachers are fully equipped to deliver the curriculum, adapt materials to different learning needs, and make maths both accessible and engaging for every pupil.

At Southover Partnership School, our goal is simple: to ensure every pupil masters the essential building blocks of maths, grows in confidence, and achieves the qualifications that will support their future learning and career aspirations.

Jean-Robert Etonde – Head of Maths

$$\left(\sqrt[n]{a}\right)^m = \sqrt[n]{a^m} = a^{\frac{m}{n}}$$



SPOTLIGHT ON: ENGLISH

At Southover Partnership School, we want every pupil to become a confident reader, writer and communicator. Our English curriculum is designed to support pupils at all levels, including those who need extra help and those ready for more advanced work.

From September 2025, pupils will follow one of two English pathways:

1. Support & Foundations Pathway

For pupils who are strengthening their basic literacy skills. They will work towards:

- Entry Level English
- Functional Skills English

This pathway includes pupils in our Nurture Group and those who still need support with reading, phonics or writing fluency.

2. Stretch & Challenge Pathway

For pupils who are ready for more challenging work. They may work towards:

- Functional Skills Level 2
- GCSE English Language
- GCSE English Literature (selected pupils)

This ensures high-attaining pupils are stretched and able to progress quickly.

How We Teach English

At Southover we use a mastery approach, meaning pupils learn key skills carefully and securely before moving on. Across all three sites, pupils on the same pathway and stage will study the same topics, no matter their age. This helps us close learning gaps and keep teaching consistent. Every pupil has at least three English lessons each week, with extra support for those working towards important qualifications or needing extra support. At the start of the year, pupils complete a baseline assessment so we can understand their reading, writing and communication needs. This includes reading tests, writing tasks and phonics checks.

We also offer additional support such as:

- Synthetic phonics
- Reading fluency sessions
- Writing boosters
- Vocabulary and speaking & listening groups
- Homework & Reading Club



TITLE

Building Skills for Life

English at Southover is not just about exams. Pupils also learn real-life literacy skills, such as reading letters, forms, timetables, writing emails and expressing themselves clearly in conversations.

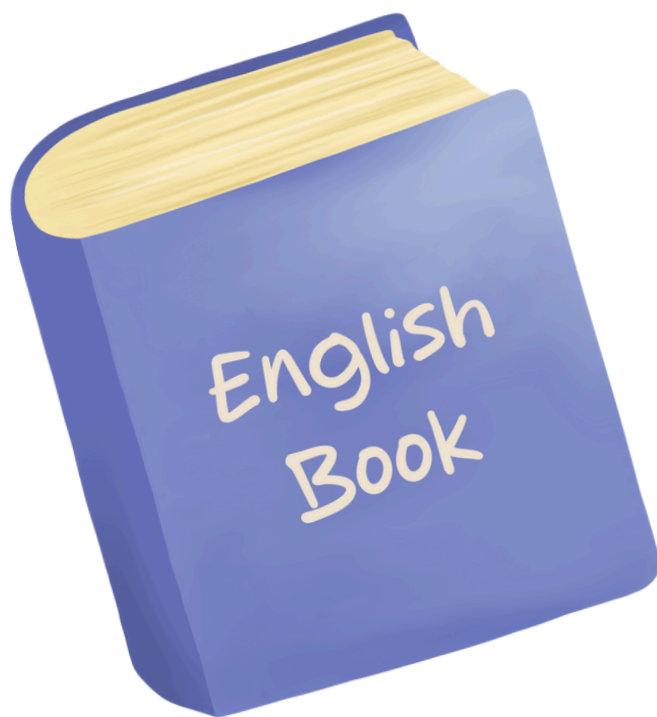
Supporting Our Staff

Teachers receive regular training so they can deliver high-quality, engaging lessons for pupils with a wide range of needs.

Our Commitment

We believe every pupil can succeed in English. Our aim is simple and links closely to the school's ethos (trust – believe – succeed): to help every young person develop the literacy skills they need for learning, independence and future success.

Oana Robu – Head of English



THE GREAT SOUTHOVER BAKE OFF

Staff and students put their baking skills to the test to raise money for a cancer charity.

All three sites took part in The Great Southover Bake Off as part of the nationwide Macmillan Coffee Morning initiative.

The treats were judged by executive headteacher Angela, who said: "I was lucky enough to sample an incredible array of cakes, bakes, and goodies created by our talented students and staff.

"From gooey brownies to perfectly baked scones, the creativity and care that went into each contribution was truly impressive.

"It's moments like these that remind me what makes Southover so special, experiencing our sense of community, warmth, and shared celebration across sites for a very deserving cause.

"Thank you to everyone who took the time to bake, organise, and share your culinary creations. You made the morning an absolute delight."

Kingsbury Manor :
Rhys

Edgware:
Tia and Nina

Overall student
Star Baker:
Zak
from Finchley

Finchley:
Noa

Staff Star Baker:
Deeqa

THE GREAT SOUTHOVER BAKE OFF



LIFE AT THE FARM

Students from all three Southover sites have been experiencing working life at the farm.

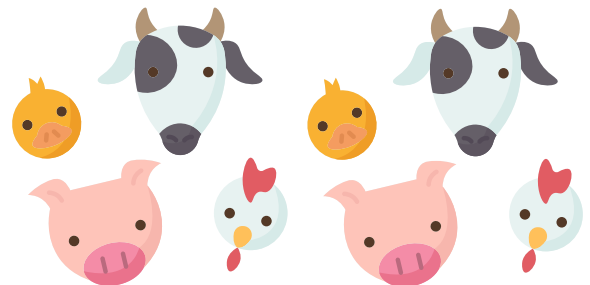
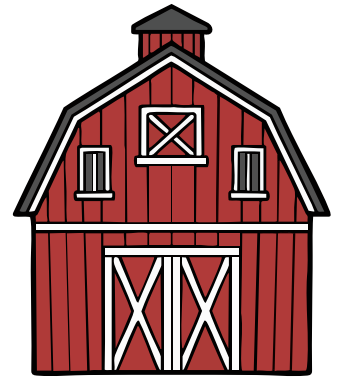
The children have been taking care of the animals at Freightliner Farm, by giving them food and water, as well as clearing out their living spaces.

They have also been helping the Islington farm prepare for seasonal activities - such as crafting pumpkins and ghosts for a Halloween trail and making stars out of willow sticks and ivy for a Christmas activity.

Farm lead Sara, who supports KM students at the farm on Tuesdays and Wednesdays, said: "It is really heartwarming to see the students from the different sites getting together each week. "They work really well together as a team and some lovely friendships have been formed, with lots of bonding over the students' shared love of animals."



LIFE AT THE FARM



SKATING INTO ACTION



There were many slip ups but it was all in good fun at a Southover ice skating trip. Students and staff from all three sites took to the indoor rink at Alexandra Palace. Some of the participants had done it before, while for others it was their first opportunity. Many of the beginners used the snowmen helpers to support them with their balance, although there were a handful who took to skating independently straight away, displaying great confidence!



SKATING INTO ACTION



GETTING TO GRIPS WITH COLLEGE



Students have given themselves a fresh challenge this term as they began an animal care course at college. Kobi from Finchley, and Casey and Sadie from KM have been learning to look after creatures big and small at Capel Manor in Enfield.

Sadie said: "I'm finding it good here. The best thing about being at Capel Manor College is stroking the animals."

Kobi said: "I am really enjoying my course at college, everyone here is very nice."

Casey overcame one of her fears when she held a tarantula. Other animals the students care for include donkeys, meerkats and sheep.



SOUTHOVER CERTIFICATE PRESENTATION EVENING

Students were awarded with qualifications and scrolls in Southover's first Certificate Presentation Evening. The event took place at Kingsbury Manor and students were awarded for a variety of courses, comprising GCSEs, Functional Skills, Entry Level Certificates, BTECs and NCFE awards.

They were also given a scroll with the words "You are a Southover Achiever" and the school's motto: "Trust, Believe, Succeed."

The list of award winners are: Adriano, Noa, Blu, Rhys, Emile, Sergio, Jake, Tia, Liam M, Adam, Kylar, Liam W, Coby, Krisy, Rostam, Carlo, Casey, George, Harrison, Jahnayah, Jay, Jasmin, Leor, Sadie, Shyhiem, Zack, Dawid and Kai.



ROCKING OUT WITH WEJAM!



This term, The Southover Partnership turned the Kingsbury Manor site into a full-on music studio! For three exciting days, students and staff from all three sites came together to take part in the WeJam Music Workshop — and trust us, it was every bit as fun as it sounds.

The mission? To experience what it's really like to play in a band.

With electronic drum pads tapping, keytars shining, and keyboards ready to go, participants jumped straight into learning how to play real songs. Thanks to WeJam's amazing custom software, everyone could follow along on screens that showed exactly what to play and when. You simply picked your instrument, selected your song, chose your difficulty level... and you were suddenly performing like a seasoned musician!

Some students absolutely loved being in the spotlight, while a few staff members may have accidentally discovered their rock-star alter egos. But no matter the level of experience, everyone worked together to keep the tempo, hit the right notes, and hold them long enough to make each song come alive. Pre-programmed or not — the music only happened because our participants made it happen.

A huge shout-out and thank you to David Tshulak for leading all three workshops with energy, patience and enthusiasm.

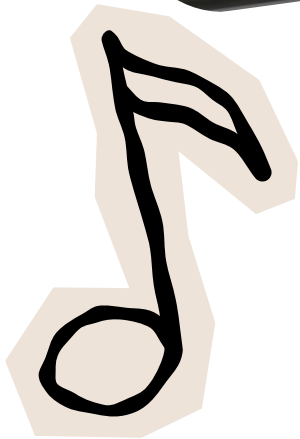
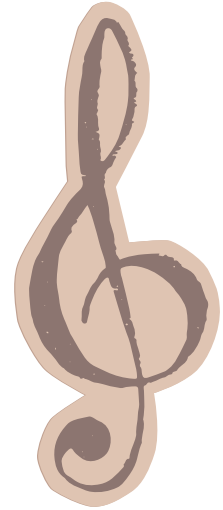
David created a warm, welcoming space where everyone felt confident enough to grab an instrument, follow his lead, and perform as a team in just a short amount of time.

It was a memorable experience, and we can't wait for more opportunities to make music together in the future. Until then... keep jamming! To learn more about WeJam, please visit <https://wejam.studio/>

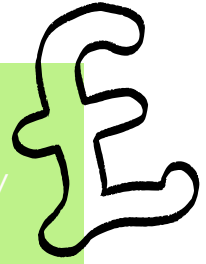
Shawn George - Music Tutor



ROCKING OUT WITH WEJAM!



TALK MONEY WEEK



In November The Southover Partnership School proudly took part in Talk Money Week 2025; an annual national initiative designed to encourage everyone to “Start the Conversation” about money. This year’s theme focused on building a culture of openness around finances, helping pupils and staff feel informed, supported and confident in making financial decisions.

At The Southover Partnership, we know that financial literacy is not just a life skill for adults, it is an essential part of preparing our young people for independence and success. Throughout the week, pupils were reminded that money affects everyone, regardless of age, and that learning to talk about it is the first step toward understanding and managing it well. Too often, money is viewed as a difficult or uncomfortable topic, but Talk Money Week gave us an opportunity to change that narrative and empower our pupils and staff.

Across different lessons, teachers explored a range of financial topics to help pupils develop healthy money habits. Discussions touched on important principles such as spending within your means, avoiding unnecessary borrowing, and building the habit of saving whenever possible. Pupils also learned about creating weekly or monthly budgets, understanding the value of money, and recognising the consequences of poor financial decisions.

It was inspiring to see pupils fully engaged, asking thoughtful questions, and participating in honest conversations about their own experiences with money.



WORKPLACE ETIQUETTE

Students from Kingsbury Manor shared ideas during a workshop about what makes a good employee covering best behaviour practices in the workplace.

Children in Year 10 and upwards had the chance to take part in the Barclays Life Skills session in November. It was led by Frankie from the charity Talent Foundry and Barclays employee Daniel.

Frankie said: "It's about what's appropriate for work, how to behave, how you can be your best self in that environment."

She invited students to talk about any good customer experiences they had had themselves.

Sadie suggested it was helpful if a retail employee showed her where something was in a big shop. Jahnayah said her optician was really good and knew what he was doing and offered lots of discounts on glasses.

The students shared examples of what not to do at work (eg. take personal phone calls, use bad language, disrespect property or be late) and they discussed how an employee should be punctual, wear appropriate clothing for the job and if they are stuck on something, ask for help; Jimmy added that they should be respectful to others. The talk moved on to communication and body language. Leor mentioned that it was important to make eye contact with someone you are directly addressing, although it was also acknowledged that employees understand that some people are uncomfortable making eye contact.



RESPECTING REMEMBRANCE DAY

This term students refreshed their understanding of why we observe Remembrance Day.

Staff hand-made poppies and students took part in cross-curricular activities between English and art at Kingsbury Manor.

KM and Edgware students who attended farm that day held a two-minute silence to mark the event.

We would like to thank all staff and students who contributed to this meaningful commemoration.



PE AND WELLBEING AT KM



Lots of exciting things are happening in PE at KM.

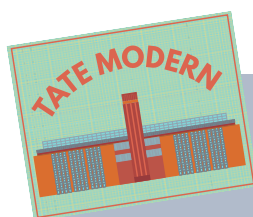
The school has launched Mindful Mondays, a lunchtime club for students to have a quiet space in the therapy room to help regulate students alongside an opportunity to chat to PE teacher Aaron or TA Ezgi if anything is on their mind.

Aaron has also launched KM's first after school club for CNAT students to attend to help them succeed in achieving their qualification (2.30pm-3.15pm).

The fitness studio is now open every break time for students to come play darts, work out or just chat with staff or peers.

Jack Petchey orders have all come through from when Aaron won the vote and gave the money back to teachers for their rooms. This has created a noticeably softer and welcoming environment throughout the school.

Lastly, we launched PE in the Dell in Radlett, which allowed for a wonderful alternative style of PE with the first lesson being laser tag.



INSPIRATION AT THE TATE MODERN

Students got snap happy during an excursion to an art gallery to improve their photography skills. Key Stage 4 and 5 students from Kingsbury Manor enjoyed the trip to the Tate Modern in London.

Art teacher Precious said: "The students followed the orange lampposts from the station all the way to the gallery.

"The aim was to discover fresh sources of inspiration for the Identity project while exploring photography along the way.

"Students engaged with the interactive digital art station and took in the stunning views over the Thames."

DISCOVERING THE JOY OF ART AT KINGSBURY MANOR

The art studio has been buzzing with creativity this term as students explored a wide range of mediums.

They developed printmaking skills, practiced drawing, created tessellations and optical illusions, built Lego sculptures (inspired by artist Keith Haring), and designed expressive self-portraits as part of the Identity project.

Seasonal crafts added even more variety to their work and we look forward to seeing what our young artists will create next term!



LIFE BEYOND SOUTHOVER

The careers educational visit to the London School and College Leavers Festival hosted at Excel, London was overall a successful visit. Before departure, our students attended a briefing session in the morning with the School Careers Lead and their support staff members. During the briefing, we discussed our travel plans to and from, expectations set by the school and the event organisers, and safeguarding.

We travelled from Kingsbury Manor site to Excel, London using the Jubilee line and DLR. It was a long journey but our students managed the journey very well by staying in groups and following the instructions provided by staff members and the group leader. On the way back, some students travelled back to their home independently with preauthorisation - this showcased their ability of travelling independently and managing time.

Once we reached Excel, London - we completed our registration, collected optional SEN and No Film/Photography lanyards for all our students. We agreed on a 'meeting point' to meet back at a designated time for departure. Once the discussion was completed, all of our students were allowed to meet the careers staff and external vendors by themselves with support staff supervising from a distance. Some of the students gravitated towards their pre-selected areas of interest whilst others decided to roam freely and collect information from all possible booths and areas.

LIFE BEYOND SOUTHOVER

For our students, it was good to have this experience of travelling and managing to be in large event such as this. Even though it was somewhat noticeable that some of our students struggled with introducing themselves and marketing themselves to university, college, and apprenticeship staff, as part of our careers education programme development we will focus next on preparing them for these conversations by developing their speaking and listening skills.

From next term, we will provide mock career conversation scripts and pupils will get the chance to get 'a feel' of what said conversations would involve and ideally draw relevant conclusions.

The event followed on from a careers trip in October, when students from Year 10 and above headed out from Kingsbury Manor on a trip to Westfields to visit the London Job Show. While the event wasn't specifically tailored for entry level positions, it was a great opportunity for our students to start interacting with potential future employers and find out more about different career paths.

It was a busy event in a condensed environment but the students took this in their stride and were able to speak with different exhibitors (and fill their bags with freebies!)

SCHOOL PANTOMIME 2025



On Thursday, 18th December, we hosted our very first school pantomime!

Our warm act was our very own Noa, who designed and delivered a fantastic Christmas Quiz!"

The production, titled Jack and the Southstalk, followed Jack on his hilarious journey from Kingsbury to Edgware to Finchley as he searched for ways to get back in his mum's good books.

Our amazing cast included:

- Narrator – Georgia
- Jack – Jonathan
- Jack's Mother – Davut
- Jack's Teacher – Kerrie
- Jack's Mates – Emily & Precious
- Buttercup the Cow – Martin A
- Peddlar – Giselle
- Fairy Godmother TA – Sara
- Giant's Backup – Mary Grace
- Giant – Angela

The cast delivered a fantastic performance that entertained both students and staff, with the show-stopping dance finale as the highlight of the day. Right now, we hear that members of the staff team are being called by agents who were blown away by their incredible performances...

OH NO THEY DIDN'T!



SCHOOL PANTOMIME 2025



IMPORTANT DATES FOR THE DIARY

Date	Event
Monday, 5 January 2026	INSET Day
Tuesday, 6 January 2026	Additional INSET Day
Wednesday, 7 January 2026	Students' First Day Back
Thursday, 8 January 2026	EHT Welcome to Spring Term Online Meeting Time: 6:00 PM TEAMS link to follow
Monday, 26 January 2026	Webinar Topic: Understanding and Choosing KS4/5 Options Time: 5:30PM – 6:00PM TEAMS link to follow
Wednesday, 11 February 2026	Parent/Carer Coffee Morning with EHT Time: 10:00AM- 11.00AM Location: Edgware Site, Martin B Cohen Building, Gould Way, HA8 9GL
Friday, 13 February 2026	Last Day of Half Term – Normal 2:30 PM Finish
Monday, 16 February – Friday, 20 February	Half Term
Monday, 23 February 2026	First Day Back for Students Post Half Term
Tuesday, 24 March 2026	Parents/Carers Evening Time: 3:30 PM-6:00 PM Location: On site <i>More booking details to follow in Spring Term</i>
Friday, 27 March 2026	End of Term – Normal 2:30 PM Finish